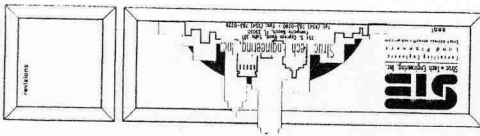


SECTION TWELVE



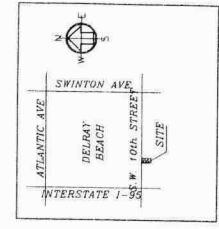
AMELUNG BUILDING
 DELRAY BEACH, FLORIDA

SP-1

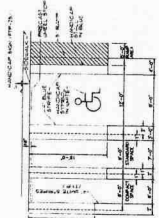
Drawn by J.D.
 Checked by R.H.
 Date 1/20/83
 Date 12/16/83
 Date 06/01/89
 Date 06/20/89

SP-1

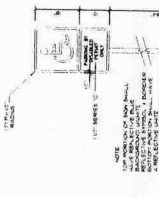
NOT FOR CONSTRUCTION



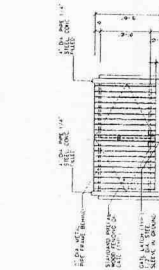
LOCATION SKETCH
 N.T.S.



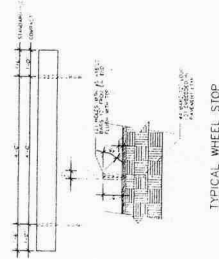
TYPICAL PARKING SPACES DETAIL RT. 4.2



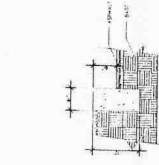
HANDICAPPED SIGN DETAILS



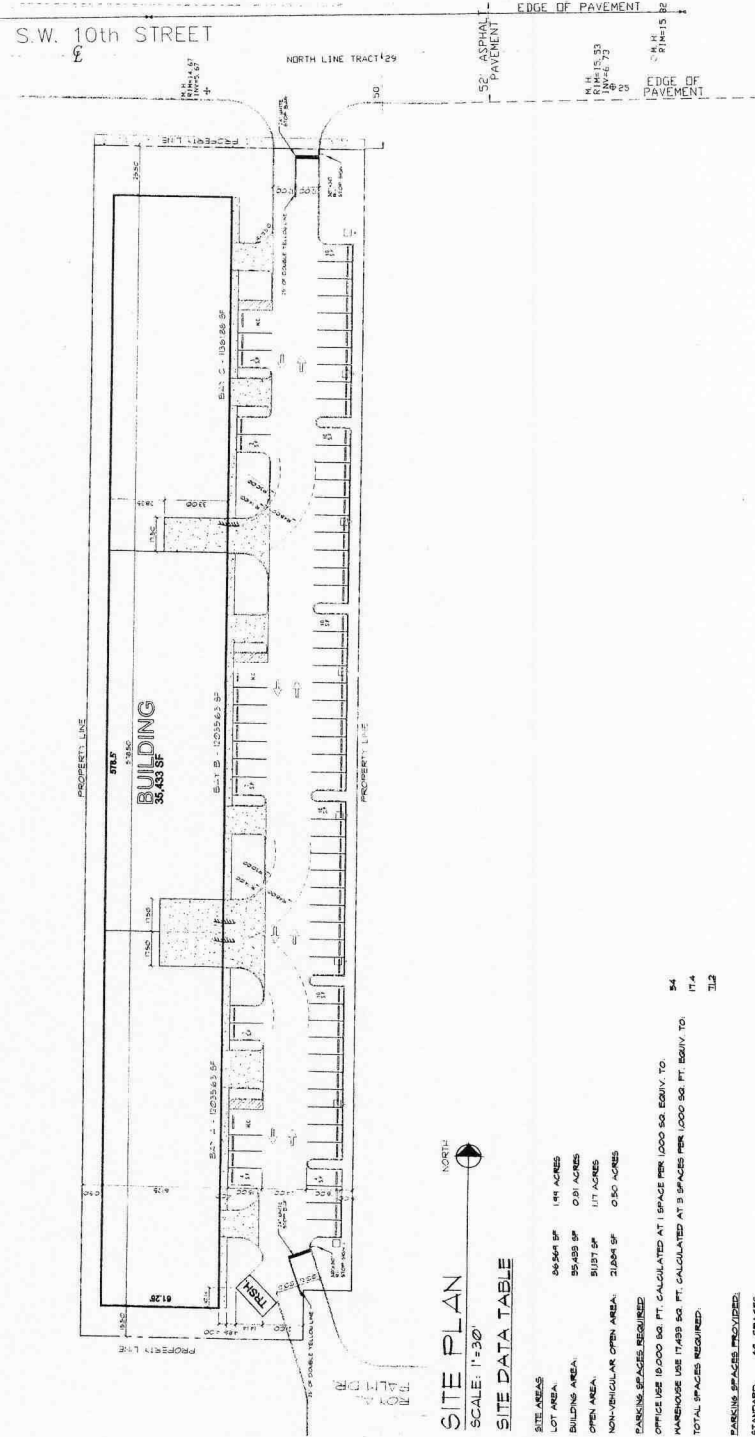
TYPICAL DUMPSTER FRONT ELEVATION



TYPICAL WHEEL STOP



6" TYPE "D" CURB DETAIL



SITE PLAN
 SCALE: 1"=30'

SITE DATA TABLE

SITE AREA	26,549 SF	0.61 ACRES
LOT AREA	26,549 SF	0.61 ACRES
BUILDING AREA	35,425 SF	0.81 ACRES
OPEN AREA	5,127 SF	0.12 ACRES
NON-VERTICAL OPEN AREA	2,184 SF	0.05 ACRES
EXISTING SPACES REQUIRED		
OFFICE USE 19,000 SQ. FT. CALCULATED AT 1 SPACE PER 1,000 SQ. EQV. TO	19	54
WAREHOUSE USE 17,439 SQ. FT. CALCULATED AT 3 SPACES PER 1,000 SQ. FT. EQV. TO	17.4	17.4
TOTAL SPACES REQUIRED		71.2
PARKING SPACES PROVIDED:		
STANDARD	64 SPACES	
HANDICAPPED	3 SPACES	
TOTAL	72 SPACES	